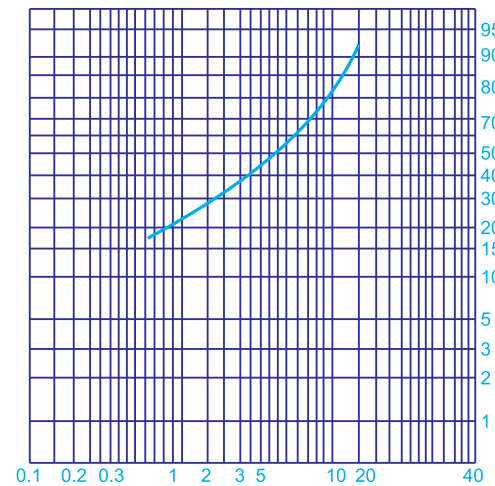
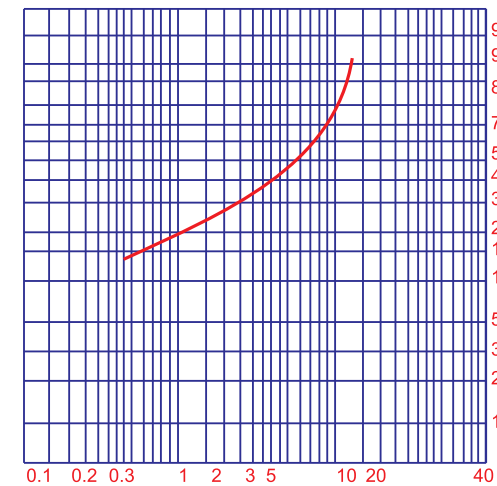


Trial on Gyrol 300  
Material : Fused Alumina (4-40)  
Capacity : 20 TPH  
Product : 0-20



Product - Grain - Distribution

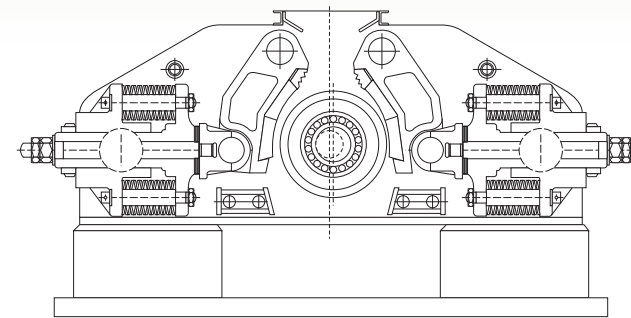
Trial on Gyrol 300  
Material : Quartzite 10/18  
Capacity : 13.3 TPH  
Product : 0-10



Product - Grain - Distribution

## IMPORTANT FEATURES

- ✍ Produces cubical grains.
- ✍ Much less power required compared to Jaw Crusher with same output.
- ✍ Gyrol can produce two entirely different products thereby required grain analysis can be achieved.
- ✍ With shim addition/subtraction setting can be changed easily.
- ✍ Complete safety against uncrushable and overloads.
- ✍ High crushing speeds, gives impact crushing action.
- ✍ Crushing Roll Gyrates slowly so almost no friction and much less wear.
- ✍ Very high reduction ratios.
- ✍ Wear on the roll is 1/15 of cone crusher.
- ✍ Low feeding height.



### MANUFACTURERS OF :

- JAW CRUSHERS
- IMPACTORS
- VERTICAL SHAFT IMPACTOR (V.S.I.)
- HAMMER MILLS
- DOUBLE ROLL CRUSHERS
- VIBRATING SCREENS
- TOOTHED DOUBLE ROLL CRUSHERS
- GRIZZLY FEEDERS / RECIPROCATING FEEDERS
- FEEDERS & COMPLETE TURNKEY PLANTS



PERFECTION IN SIZE REDUCTION TECHNOLOGY  
**ECOMAN**

OFFICE : D1/D2, Vishwamitridham,  
Behind Railway Colony, Vishwamitri,  
Baroda-390 011. Gujarat, India.

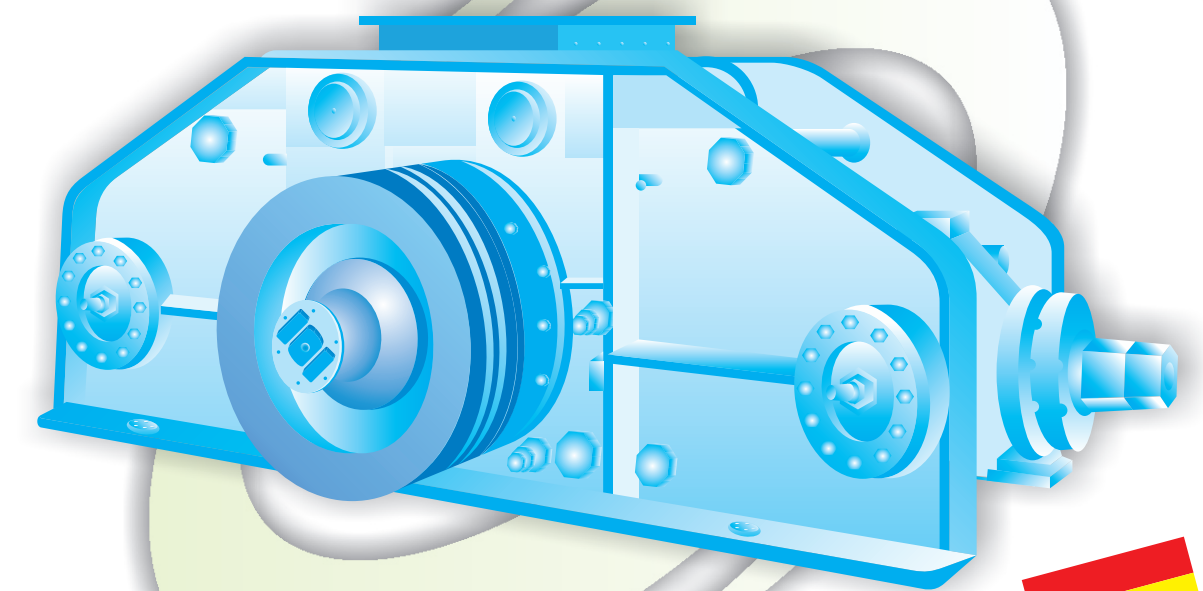
Ph. : 0265-2661846 / 2660401  
Fax : 0265-2661297  
e-mail : [info@ecomanindia.com](mailto:info@ecomanindia.com)

Website : [www.ecomanindia.com](http://www.ecomanindia.com)

Substitute for Cone Crusher  
Secondary Crusher, Economical & Simple for Cubical Products

# GYROL

## Secondary Crusher



With GERMAN  
Technical Know-How!

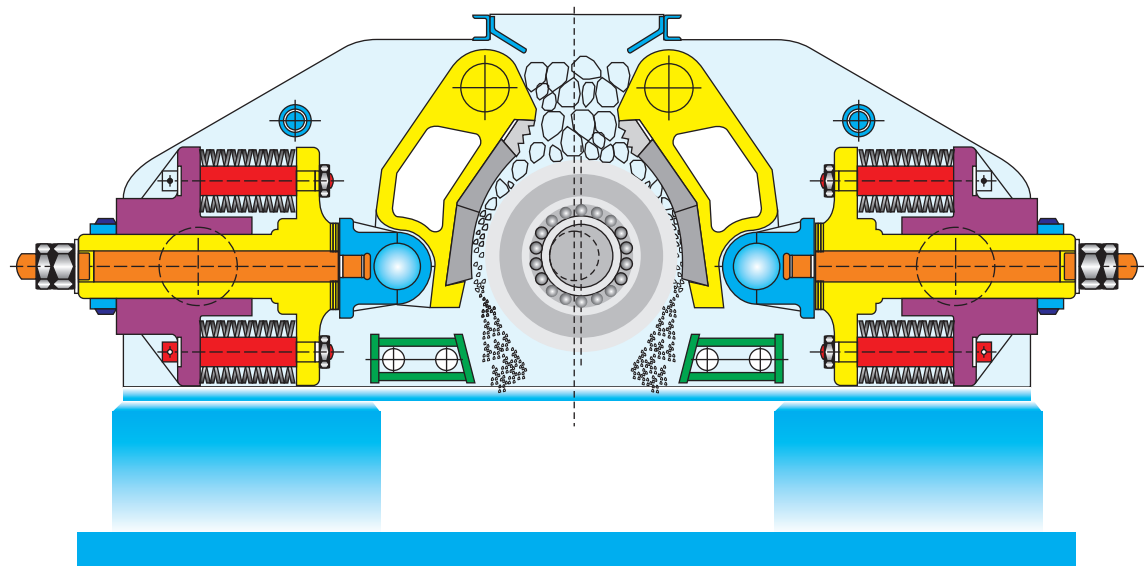
The "Gyrol" Crusher, is an extremely compact high crushing capacity crusher.  
Running cost is very low and gives, desired good cubical product.  
Very simple in construction. Therefore easy to maintain.

HIMALI # 93282 79679

PERFECTION IN SIZE REDUCTION TECHNOLOGY



**ECOMAN**



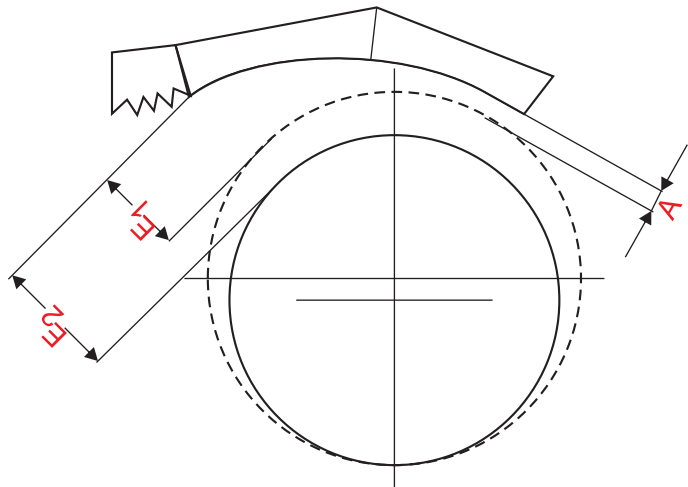
The "Gyrol Crusher" is a crushing unit for the production of high-class cubical grains from all types of stones. Owing to its operation principle and design characteristics, the machine finds a wide field of applications, like Sponge Iron Grade Iron Ore.

The crusher roll is mounted on an eccentric shaft in antifriction bearings. When the eccentric shaft, which is also carried in anti-friction bearings inside the housing, rotates, the crusher roll moves in a reciprocating manner relative to the crusher jaws. The jaws are of the adjustable type, but, during the crushing operation, they remain in their set position.

The rock or stone introduced through the feed hopper is crushed between roller and jaw. After sufficient size reduction, the crushed material leaves the crushing chamber of the bottom.

During crushing, the crusher roll can freely roll on the cushion of material in the chamber. As a result, there is practically no frictional loss during the crushing process. A high crushing efficiency and a minimized wear of the crushing elements are the further result.

The eccentric shaft and the supports of the crusher jaws are equipped with overload protection devices. Owing to such features, the Gyrol is almost completely insensible to the entry of unbreakable foreign body.

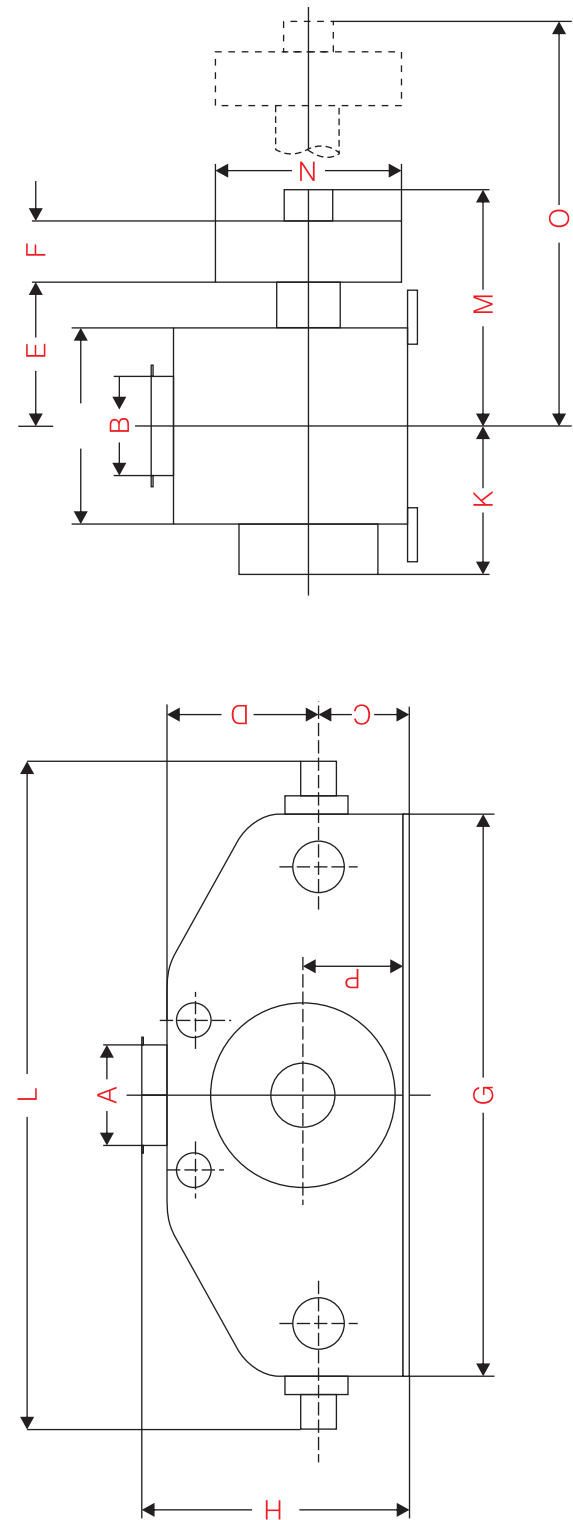


# TECHNICAL DATA

A. ROLL-ROTATION  
HL : UPWARDS  
AL : DOWNWARDS

[illegible]

# DIMENSIONS



### MINIMUM DISTANCE FOR ROLLER DISMANTLING

[illegible]